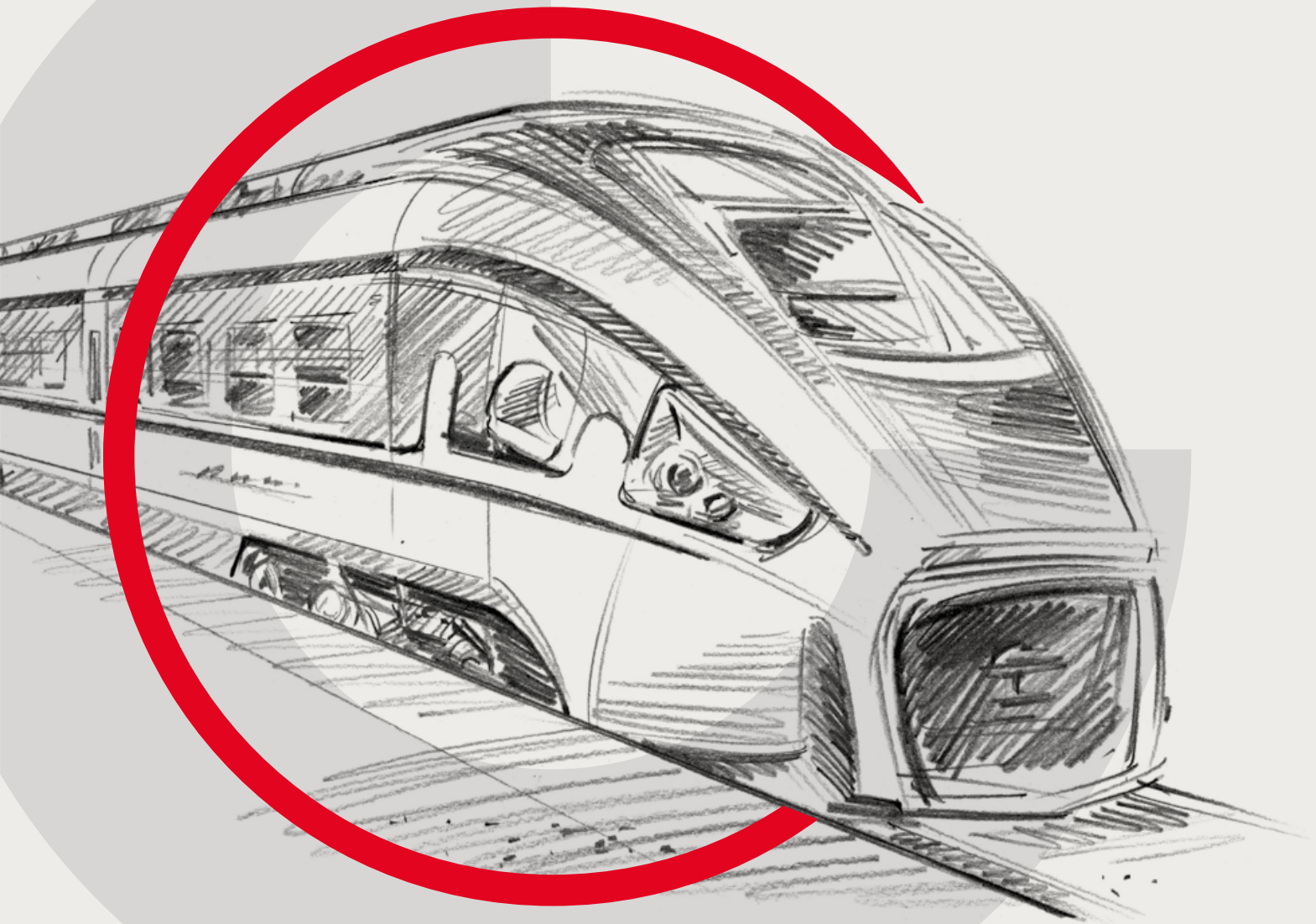


 **Tribotec**

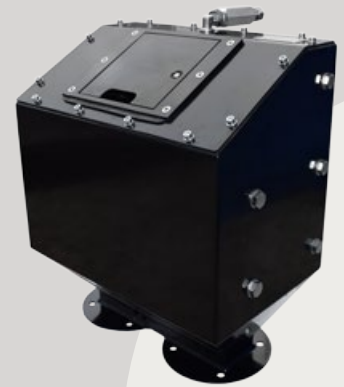
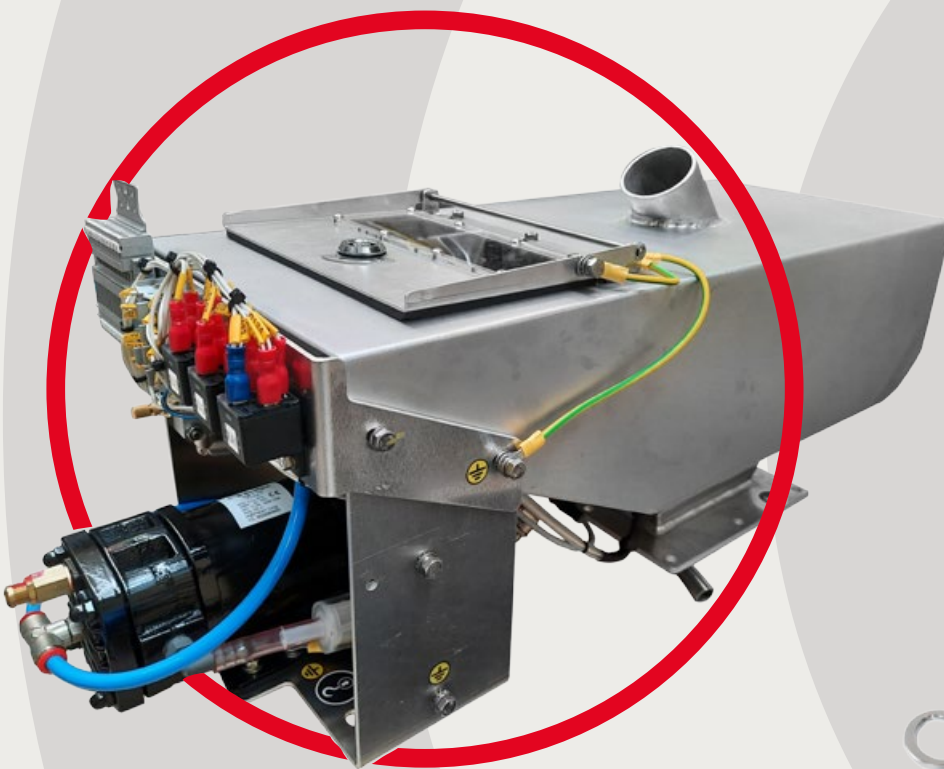


RAILWAY
SOLUTIONS

SANDING SYSTEMS

Tribotec supplies sanding systems for locomotives/EMUs as well as trams/LRVs. The design of the device is usually individually adapted to each type of vehicle. The sandboxes have their own heating which decreases the sand moisture and prevents its potential freezing. Filling the sand box with sand may be done manually or using a filling gun. The amount of sand in the sand box is either monitored by electric sensors, or the sand box is equipped with a sight-glass to check the level of sand. As a standard, the system is equipped with heated sanding nozzles. We also provide filling flaps in several versions.

Our sanding systems are produced in a number of versions and are also suitable for retrofitting of older vehicle types



APPLICATION

- trams
- locomotives
- EMUs/DMUs
- for new vehicles and retrofits

FEATURES

- variable design
- customized solutions
- simple modular concept
- TSI compliant



Tribotec

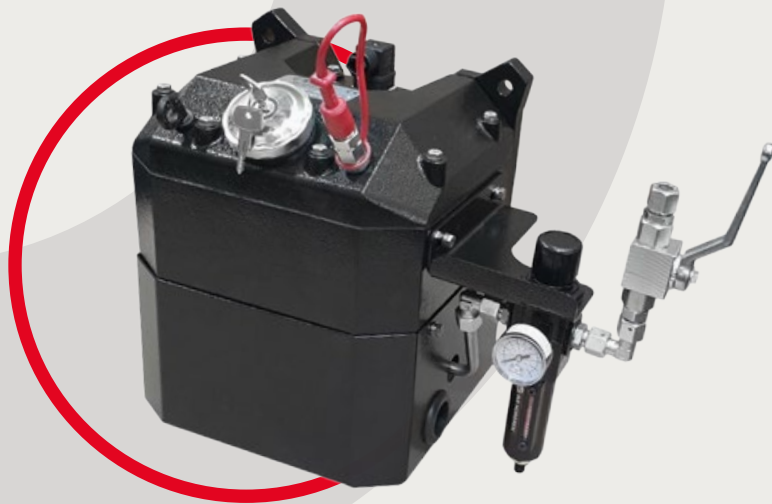
WHEEL FLANGE LUBRICATION

The system features the principle of applying air/grease mixture to the contact areas of wheel flanges and rails. During a greasing cycle, a controlled amount of the mixture is sprayed constantly onto the lubrication point of each wheel flange.

Tribotec's lubrication systems are manufactured in several versions suitable both for installation in the vehicle interior or on the vehicle bogie, including low-floor vehicles.

TOP-OF-RAIL LUBRICATION

The system operation control and monitoring is carried out in several ways – using the vehicle's master control system, automatically via a dedicated track curve detecting sensor, or as smart adaptive control performed by a GPS system according to the ambient conditions and the track characteristics."



APPLICATION

- trams
- locomotives
- EMUs/DMUs
- for new vehicles and retrofits

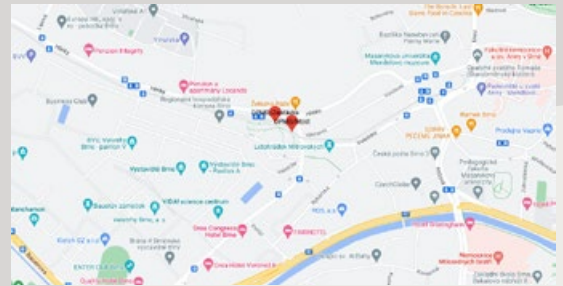
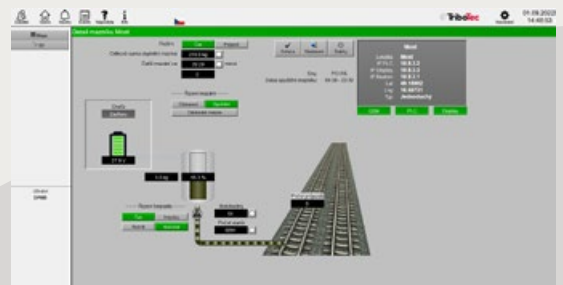
FEATURES

- Tailor-made solutions
- Exact metering,
- Wide range of control modes

STATIONARY TRACK LUBRICATION

Tribotec provides a solution designed for the treatment of the leading edge of the rail as well as for the conditioning of the rail head. The use of these devices decreases the wear of the rails and reduces the noise generated by the passage of rail vehicles.

The lubricant is automatically applied to the rail using an application bar that is adjustable to suit most of the generally used flat bottom rails. Control of the system is adjustable according to the requirements of the traffic route. As an option, the system may be equipped with a remote-control module that enables setting and control of the device via web browser.



APPLICATION

- rail/tram track
- leading edge/check rail treatment
- rail head conditioning

FEATURES

- simple design
- wide range of accessories and control modes
- possibility of remote control

REFERENCES



16Ev



18Ev



39T



40T



45T



471



Eeffiliner 1600



EffiShunter 1600



Gamma LF 07 AC



HRCS2



Lajkonik



M27



Smart Artic X34



Smart Artic X54



Swing 122Na

WHO WE ARE

WE ARE A CZECH MANUFACTURER OF CENTRAL LUBRICATION SYSTEMS, LUBRICATION TECHNOLOGY, HYDRAULICS AND SPECIAL SYSTEMS FOR RAIL VEHICLES.

FOR RAIL TRANSPORT WE PRODUCE:

- sanding systems
- wheel flange lubrication systems
- system for railhead conditioning
- stationary track lubricators for rail curves and rail heads.

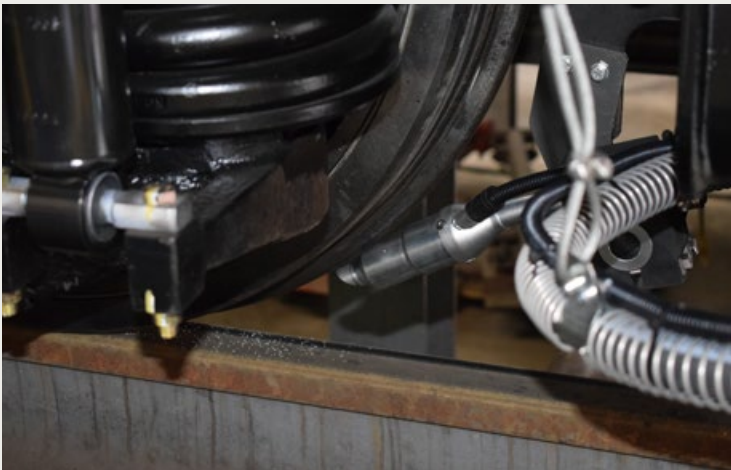
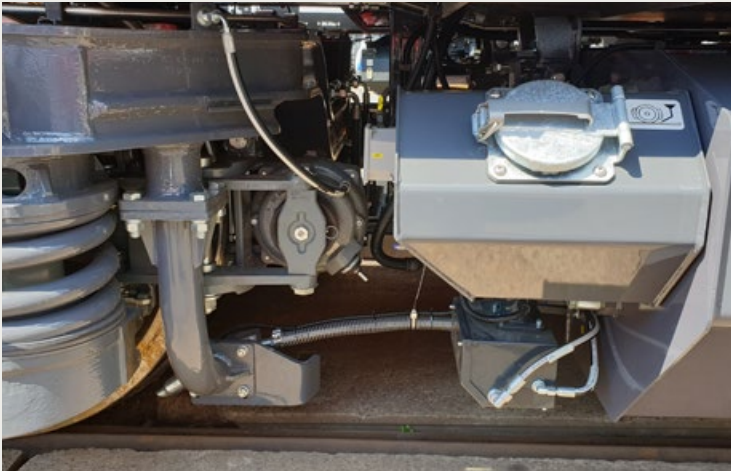
CUSTOMIZED SOLUTIONS are our key strength. Product development focuses on standard solutions that allow a wide range of modifications according to specific technical specifications with low project preparation costs. We offer consultation, advice processing of variants of individual systems according to customer requirements. We also develop and produce technically unique pieces and single-piece deliveries that are designed based on defining the utility and functional parameters of the equipment.

We provide installation, assembly and commissioning directly at the customer's site. Our after-sales services include **after-sales service, preventive maintenance, spare parts supply and consulting.**

Our products for rail transport are certified in accordance with TSI.



SAMPLES OF APPLICATIONS



WHERE WE ARE



TRIBOTEC, spol. s r.o.
Kosulicova 656/4
619 00 Brno
Czech Republic



tel: **+420 543 425 611**
email: **tribotec@tribotec.cz**

www.tribotec.cz